



2016 TEREX PT50T 6WS00361

ZM008882

From our yard to yours.

As an Australian family-owned company with global reach, Tilly's are constantly sourcing quality used machinery, from dozers to excavators. We recondition and repair where necessary to provide you with genuine alternatives to purchasing new machines. Speak to one of our experienced team today for the right machine, at the right price, right now.

MACHINE TYPE

SKID STEER

YEAR

2016

MAKE

TEREX

MODEL

PT50T

SPECIFICATIONS

ASVPT50TL6WS00361, 50HP-37KW PERKINS 404D-22T-GP65720N-797540A ENGINE, OPEN ROPS CANOPY, AUX HYDS & POWER, MANUAL QUICKHITCH, NORM ENGINEERING 1580MM GRAPPLE BUCKET SERIAL# 58605, NEW 381x101.6Bx42 TUFFTRAC RUBBER TRACK, SHOWING4478 HOURS, 2.8 TONNE, 3.25L, 1.6W, 1.95H, *CONDITIONS APPLY*

Contact our Sales team

07 4633 6000

mail@tillys.com.au

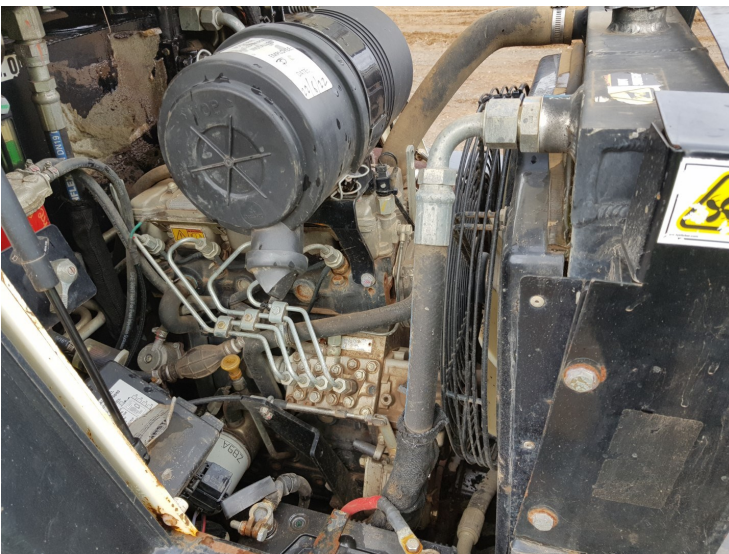
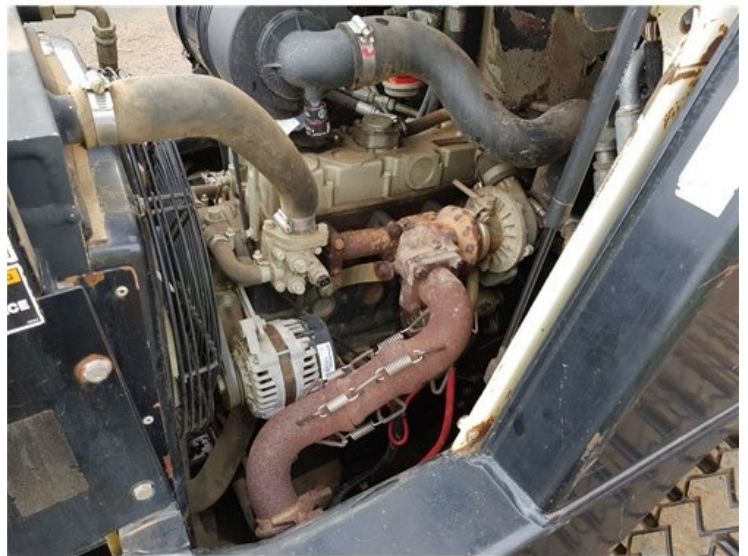
www.tillys.com.au

\$44,500.00 inc GST



2016 TEREX PT50T 6WS00361

ZM008882



*CONDITIONS OF SALE

All Machinery sold UNREGISTERED without STATUTORY WARRANTY.
Purchasing from overseas? View our website for terms and conditions.

www.tillys.com.au

